

# COP Face to Face

Learning from COVID-19. How COVID-19 Social Protection Shock Response Interventions Have Been Integrated into National Policies

June 22-23-24, 2021



# COP Face to Face

June 23, 2021

**Domestic Budget Reallocation and/or Resource Mobilization in Response to  
the COVID-19 Emergency**

**RWANDA**

*Presented by DG/LODA*



# Introduction

The Social Protection Response and Recovery Plan aims to support the most vulnerable households already supported through Social Protection instruments but also new households with an increased vulnerability due to the COVID-19 shock, the main intervention components are:

- Immediate relief response
- Economic relief response
- Accompanying measures



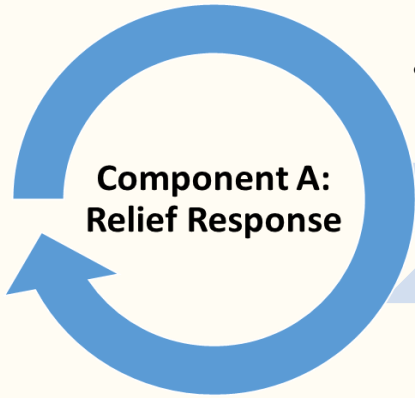
Integration of  
COVID-19 Social  
Protection Shock  
Response into  
National Policies

The SP Response and Recovery Plan to COVID-19 (SP-RRP) is built around the following existing Government's Social Protection framework.

- Classic Public Works
- Expanded Public Works
- Direct Support
- Nutrition Sensitive Direct Support
- Financial Services
- Milk Supply
- Skills Transfer
- Productive Asset
- Access to basic services
- Food Distribution
- Productive Asset Transfer



# Performance against targets by components



## CPW HHs

- Baseline: 157,852 HHs
- Achiev. : 171,693 HHs

## VUP DS

- Baseline: 116,240 HHs
- Achiev. : 119,756 HHs

## FARG (DS)

**26,831**  
HHs

## EPW

- Baseline: 40,454 HHs
- Achiev. : 58,122 HHs

## NSDS

- Baseline : 30,000 HHs
- Achiev. : 124,906 HHs

## Food distribution

**194,811**  
HHs

The government waived off some of the work requirements and also beneficiaries had to work in alternating manner

# Performance against targets by components

## Component B: Economic Response

**Labour-intensive/High Impact (HI/MI) projects :**  
Achievement s: 24,536 HHs (7,286 female-HHs & 17,250 male-HHs)

**Girinka program :**  
12,264 cows were distributed to poor HHs and 70,797 HHs received small livestock

**Skills transfer and toolkits**  
: 10,567 individuals received formal skills training and tool kits through the NEP and 1275 projects supported

**Milk distribution :**  
1,233,528 liters of raw milk distributed to vulnerable HHs for consumption. The milk was provided to children with acute malnutrition.

**Financial services (Access to Finance) :**  
79,758 HHs received FS to implement small projects

## Asset Transfer (boosting the agricultural production for season B and C in 2020)

- Access to vegetable seeds to cover 5,105.3 Ha in Season C
- Sweet potato vines to farmers to cover 2,022.6 Ha
- Access to fertilizer: 89,963 MT distributed
- 6,970.5 MT of seeds composed of 5,621 MT of Maize, 902.7 MT of Wheat and 446.8 MT of Soybean were distributed

# Component C: Accompanying measures

1

**Access to health (MUSA) :** 1,926,375 people living in Cat 1 were provided with MUSA by RSSB.

2

**Development & Implementation of Communication and behavioral change strategy** to guide and mobilise SP beneficiaries during total lock down;  
In addition to that: construction of public hand wash stations

3

**Access to education:** Under this initiative, 801,694 children studying in 1,084 public and government subsidized nursery and primary schools were provided with scholastic materials

# Emergency cash transfer by INGOs

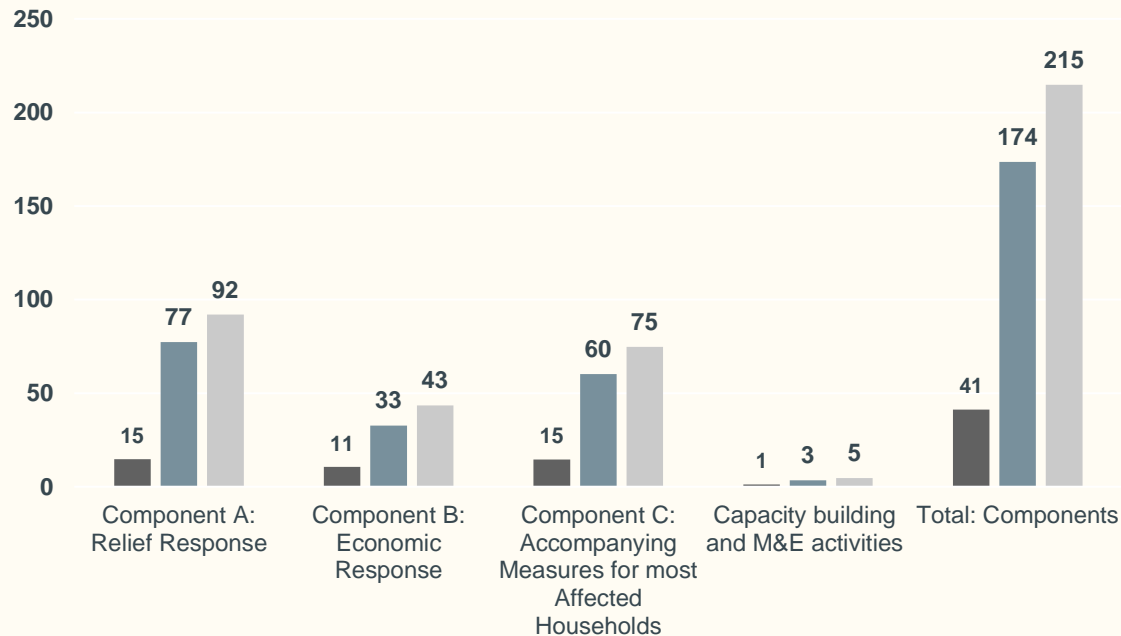
In partnership with MINALOC, LODA and Civil society organizations (**Give directly, Plan International and World Vision**), supported most affected households through emergency cash transfers to ensure that they can resume building their livelihoods as much of the informal sectors workers were affected.

29,222 HHs from informal sector (casual workers and small businesses) supported in City of Kigali

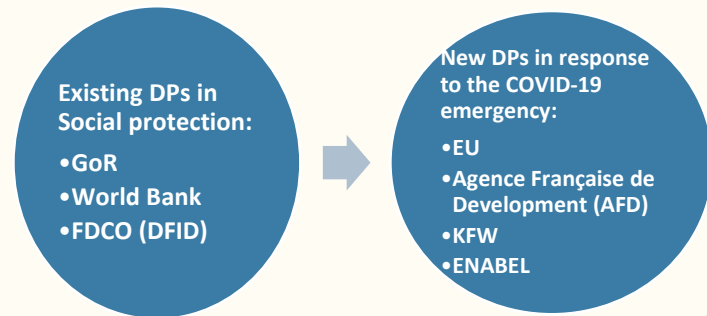
Support to 24,609 HHs working in agriculture sector across different districts, supported to access seeds and fertilizers

18,647 vulnerable HHs doing cross border trades in 7 Districts, were supported

# Budget reallocation and/or resource mobilization in response to the COVID-19 emergency

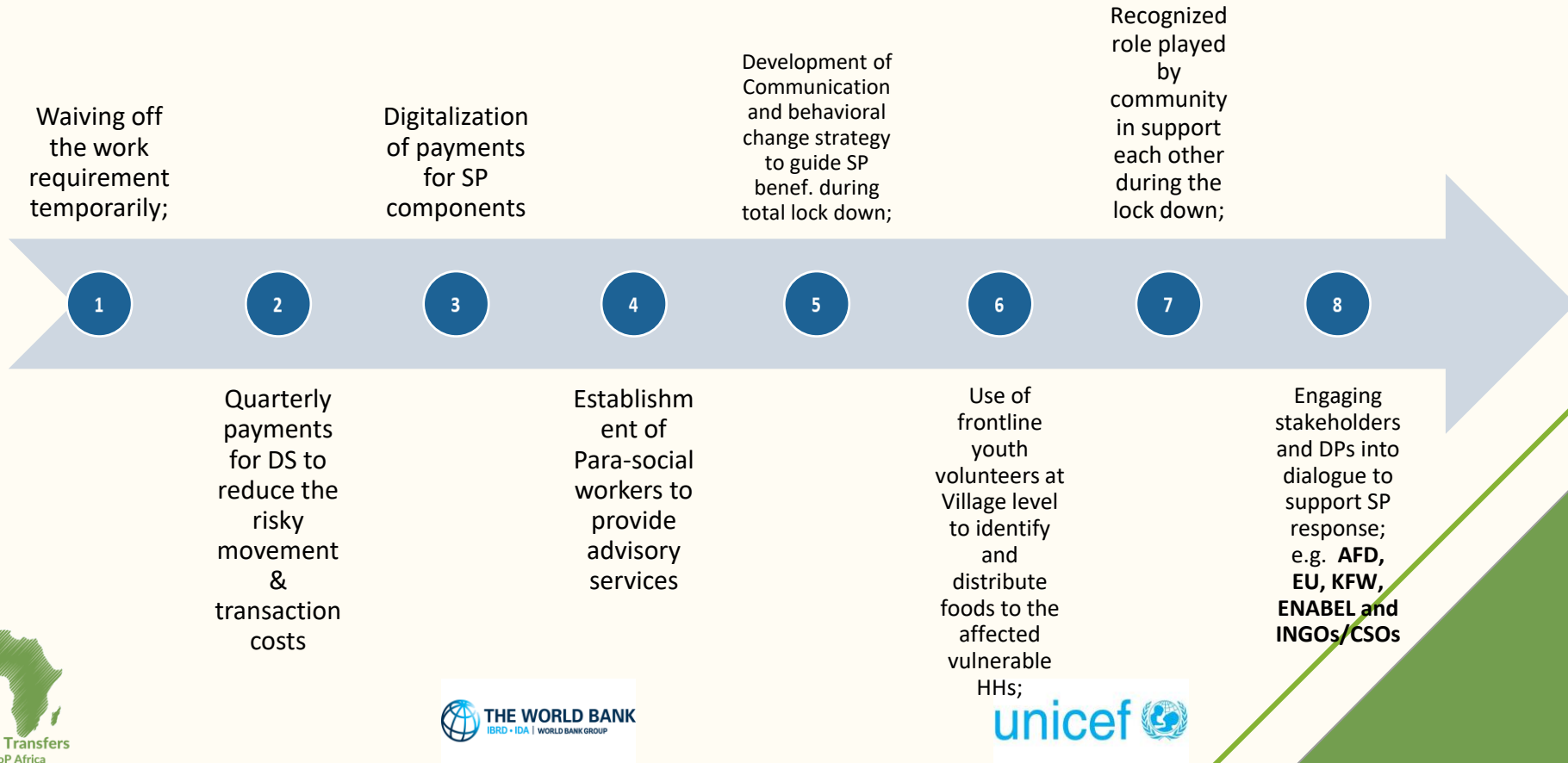


- Used budget amount in April-June/2019-2020 (in billion Frw)
- Used budget amount in 2020-2021 (in billion Frw)
- Total (in billion Frw)





# Lessons learnt on Response mechanisms to the COVID-19 emergency



# Thank you

## Any questions?

